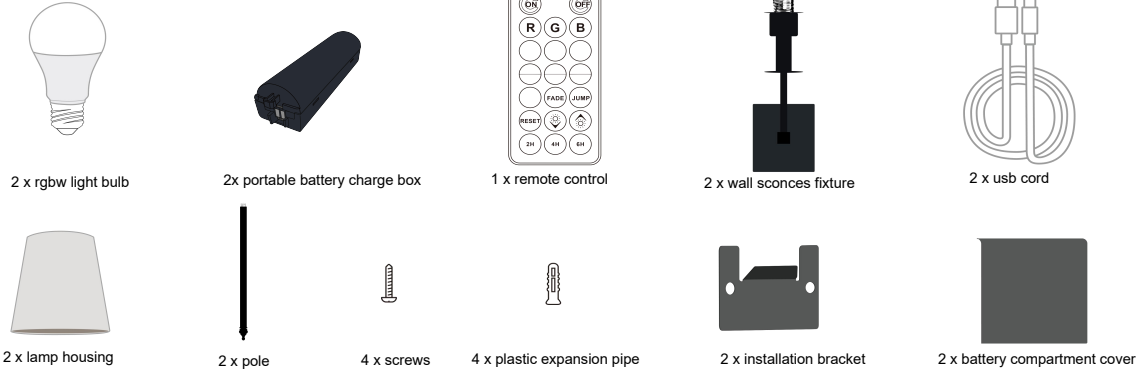


Wireless Wall Sconces

Model # JG-WSL03



PACKAGE CONTENTS



HOW DOES IT WORK

1

Unscrew the lamp housing fastening clasp of the wall sconces fixture, put the lamp housing into the lamp base, and then re-tighten the lampshade fastening clasp (as shown in figure).

Finally, install the LED light bulb and pole to the wall sconces fixture.

a. b. c.

2

Install the lamp base as the installation diagram shows, and then install the lamp on the bracket.

Installation bracket

3

Please note that if the battery charging case is not placed in the lamp, the lamp will not work, you need to install the battery charge box inside the battery compartment and then close the battery compartment cover.

Turn on by touching button on the side of the base. With each short touch, the light will change from white, red, green, blue, jump-mode, off.

Long touch to turn off the lamp. (default 100% brightness white color)

touch control button

Insert battery into the base battery bin, press the battery in until you hear a click, indicating that the battery is installed. Then close the battery compartment cover.

4

When the light is very dim or off during use, please open the battery compartment cover and press the inner battery at the side of the base, then it will pop up. Recharge the battery by USB cord and power adapter (Power adapter not provided, we suggest to use a power adapter of 5V 2A or above). There is a charge indicator near the Type C port on the battery box, it will turn to red during charging and turn to green when fully charged.

USB port

5

Default brightness when turning on the light is at 100 % brightness daylight light.

When you press RESET, the light will revert back to default daylight light color at 100% brightness.

Turn on the light

Turn off the light

Use color buttons to directly select single color mode, a total of 13 light colors to choose from

Dynamic color changing

Decrease or Increase brightness of single color mode, decrease or increase speed of FADE/JUMP mode

The light back to default daylight color with 100% brightness

Timer 2H/4H/6H

Specification

Input Voltage : 5V DC	Product Dimension : 8*6.25*23 inch
Light Color : RGB + Daylight	Weight : 1.61 lbs
Battery : 2600mAh	Material : Iron + Plastic
Light Bulb Lumen: 350lm±10%	Charge Time : approx.2-3 hours
Runtime : 3.5-4.5hrs at Daylight 100% brightness, 8-9 hrs at RGB color, over 36 hrs in dim mode.	

TROUBLESHOOTING

PROBLEM	POSSIBLE CAUSE	CORRECTIVE ACTION
1. can not turn on the light	1. battery runs out	1. charge the battery

SAFETY INFORMATION

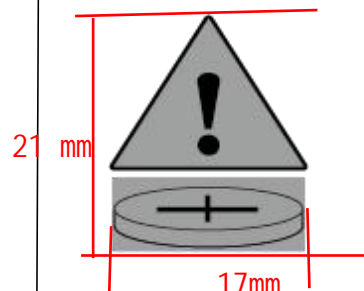
- * Please do not disassemble or modify the led light for any-purpose.
- * Discontinue use if damaged.
- * This equipment belongs to portable luminaries with batteries. The battery in this device is not user serviceable.
- * Do not try to replace it on your own.
- * The battery disposal should be in compliance with any local regulations that address the disposal of hazardous materials.
- * Do not burn any of the items.



WARNING

5mm

- **INGESTION HAZARD:** This product contains a button cell or coin battery.
- **DEATH** or serious injury can occur if ingested.
- A swallowed button cell or coin battery can cause **Internal Chemical Burns** in as little as **2 Hours**.
- **KEEP** new and used batteries **OUT OF REACH of CHILDREN**.
- **Seek immediate medical attention** if a battery is suspected to be swallowed or inserted inside any part of the body.



CAUTION



This symbol marked on the product indicates "Warning: contains coin battery".

- Remove and immediately recycle or dispose of used batteries according to local regulations and keep away from children. Do NOT dispose of batteries in household trash or incinerate.
- Even used batteries may cause severe injury or death.
- Call a local poison control center for treatment information.
- Non-rechargeable batteries are not to be recharged.
- Do not force discharge, recharge, disassemble, heat above 60° or incinerate. Doing so may result in injury due to venting, leakage or explosion resulting in chemical burns.

- The compatible battery type is CR2025. The nominal battery voltage is 3V.
- Ensure the batteries are installed correctly according to polarity (+ and -).
- Do not mix old and new batteries, different brands or types of batteries, such as alkaline, carbon-zinc, or rechargeable batteries. Remove and immediately recycle or dispose of batteries from equipment not used for an extended period of time according to local regulations.
- Always completely secure the battery compartment. If the battery compartment does not close securely, stop using the product, remove the batteries, and keep them away from children.